

NSSX



THE PEAK OF PRECISION CRAFTED PERFORMANCE

We're more than engineers. We're troublemakers, scientists, and daydreamers. Tinkerers and tireless "what if-ers." All working in the same room, experimenting, developing, and crafting new technologies and processes under one roof. Our passion for building cars flows into every aspect of our company. It's a belief and a promise: to challenge convention and ourselves at every opportunity, to always look for a better way, and to elevate driving for the betterment of us all. The NSX is the pure embodiment of the Acura brand spirit.

OVER THIRTY YEARS OF INNOVATION

When the NSX hit showrooms as a 1991 model, everything changed. It's been an icon since day one and has created monumental shifts in the industry. Our advantage is that we champion invention over convention. We build cars that can do nearly everything without compromise. Our efforts have produced many world's-first technologies that have changed the automobile industry forever.

30+







CRAFTING A SUPERCAR

The only way we could reinvent the NSX was to create a state-of-the-art manufacturing facility specifically to fulfill that goal. At each step, we had to decide whether advanced robotics or handcraftsmanship was the most effective option for that part of the process. We found that robots were better at performing a perfect weld repeatedly, so we programmed them, pioneering a way to rotate the entire chassis to ensure that more than 900 surgically-precise welds were each at the optimal angle. The bespoke twin-turbocharged V6 engine is meticulously hand-assembled by expert technicians to ensure the highest levels of quality. Approximately one hundred associates are directly engaged in constructing, painting, final assembly, and quality confirmation, working in concert with advanced robotics to build the NSX. Our definition of craftsmanship is making a perfect part from the beginning, not fixing and machining afterward. This is the new level of precision.

FORM FOLLOWS FUNCTION

When designing the NSX, form followed function. Both the design and engineering teams realized they needed to take full advantage of virtually every molecule of air passing not only over the body, but also through and under it. By integrating functional performance into the design, they could achieve true total airflow management, with every crease, contour, and bend effectively and efficiently cooling, stabilizing, reducing drag, and adding downforce to enhance the driving experience. The aesthetic is not only angular and aggressive, but also purposeful.



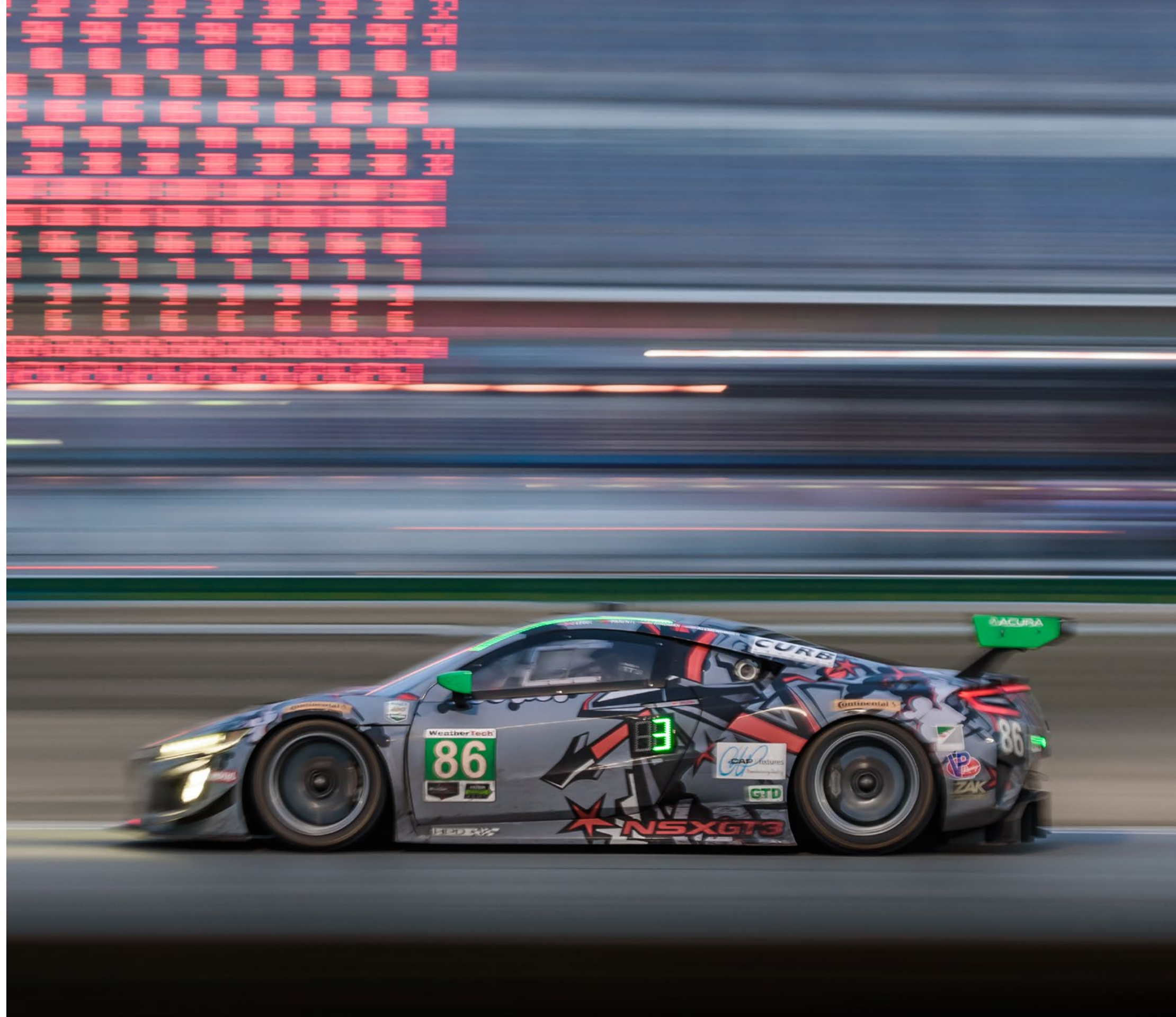


NEXT-GENERATION PERFORMANCE

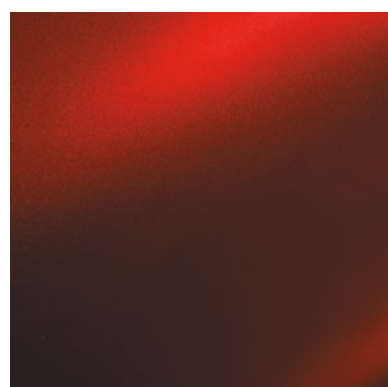
We're always challenging ourselves to deliver a more seamless connection between driver and machine. Sport Hybrid Super Handling All-Wheel Drive™ takes advantage of our thirty-plus years of innovative technologies with an entirely new torque-vectoring SH-AWD® system. Using a powerful twin-turbo V6 engine and three high-output electric motors, the system instinctively responds to driver input and driving conditions, calibrating the ideal application of torque to individual wheels as needed. Paired with four unique drive modes adjusting eleven different systems, the NSX has unequalled performance range. Quiet mode is for limited EV-only operation, Sport for normal driving in the city or on the highway, Sport+ for maximizing dynamic performance and increased agility on winding roads, and Track for maximum performance on the track. This level of performance helps turn the driver's every intention into immediate action.

RACING DNA

From the first day Acura came into existence, we've raced. The racetrack is our test track. Every June, a team of engineers makes the trek to Colorado Springs to compete in the Pikes Peak International Hill Climb. It's a grueling, one-of-a-kind race. We learn more about the relationship between driver and car than we ever could between the covers of a book. It improves our company, our people, and our performance, not only in competition, but on the road as well. The next-generation NSX GT3 Race Car is the perfect example of how challenging ourselves on the track leads to higher performance for our customers. The production and racing models share many hardware components, including the chassis and engine, so when our drivers tell us they find the production-model NSX as exhilarating as the race model, we're not surprised. We designed it that way.



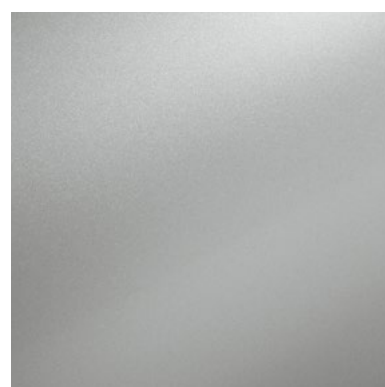
EXTERIOR



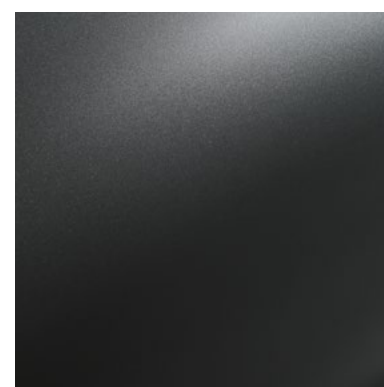
VALENCIA RED PEARL



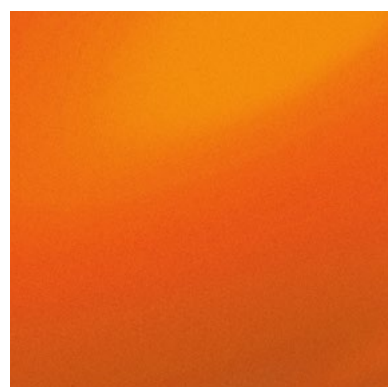
NOUVELLE BLUE PEARL



CASINO WHITE PEARL



SOURCE SILVER METALLIC



THERMAL ORANGE



CURVA RED

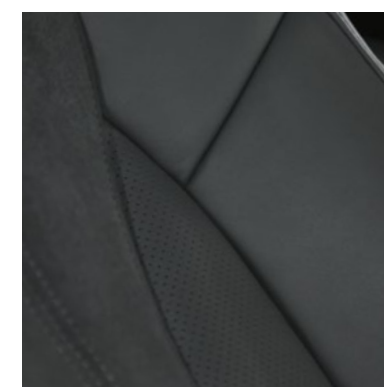


130R WHITE

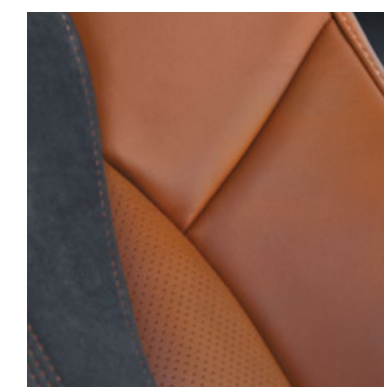


BERLINA BLACK

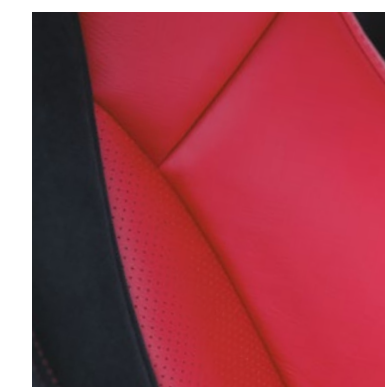
INTERIOR



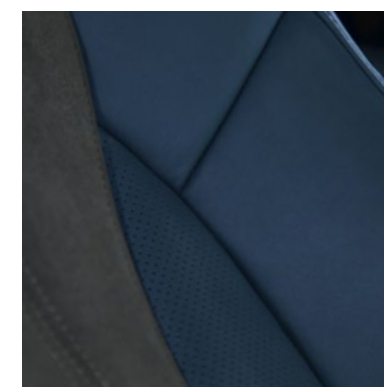
EBONY



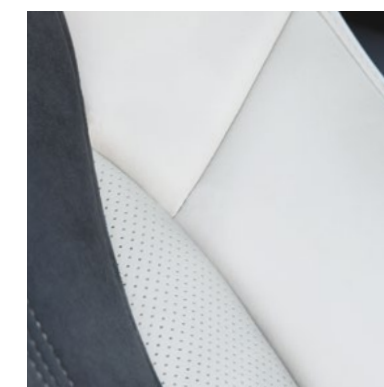
SADDLE



RED



INDIGO



ORCHID



573 hp/476 lb.-ft. of torque (System Combined Output)*
307 km/h approximate top speed
3.5-litre, Direct-Injection, DOHC twin-turbocharged engine
Front Twin Motor Unit (TMU) with torque-vectoring control
9-Speed DCT (Dual-Clutch Transmission)
with Integrated rear Direct Drive Motor
Sport Hybrid SH-AWD® (Super Handling All-Wheel Drive™)
with Direct Yaw Control
Multi-material body with ultrarigid aluminum-intensive
space frame
Integrated Dynamics System (IDS) with Quiet, Sport,
Sport+, and Track modes
Semi-aniline leather and Alcantara-trimmed
power sport seats (heated)

DIMENSIONS

Wheelbase:	2629 mm
Overall length:	4470 mm
Overall width:	2217 mm
Overall height:	1214 mm
Curb weight (depending on options ranges):	1725 kg – 1800 kg

AVAILABLE FEATURES

- Carbon Fibre Exterior Sport Package
- Carbon Fibre Interior Sport Package
- SiriusXM™†
- Carbon fibre roof
- Carbon fibre rear decklid spoiler
- Carbon ceramic brake rotors with silver, black, orange, or red brake calipers
- Iron rotors with red brake calipers
- Exclusive interwoven aluminum-alloy wheels with machined, painted, or polished finish
- Semi-aniline Milano leather power sport seats (heated)

*Total combined horsepower and torque figures includes the maximum power of the engine and all motors combined that can be produced at any one time. Not SAE net.
†Only available in certain areas. Includes a no-charge trial of three months.



©2019 Acura. Acura, NSX, Super Handling All-Wheel Drive (SH-AWD), and the stylized "A" logo are trademarks of Honda Motor Co., Ltd. Alcantara is a registered trademark of Alcantara S.p.A. ELS Studio is a registered trademark of Panasonic Corporation of North America. All rights reserved. © 2019 SiriusXM Canada Inc. "SiriusXM", the SiriusXM logo, channel names and logos are trademarks of SiriusXM Radio Inc. and are used under license.