



By appointment
to HM The Queen
motor car manufacturers
Bentley Motors Limited
Crewe Cheshire



By appointment
to HRH The Prince of Wales
motor car manufacturers
Bentley Motors Limited
Crewe Cheshire



BENTLEY

BENTAYGA



.....

BENTAYGA





INTRODUCTION ^{12/} NEW LANDSCAPES ^{16/}
TECHNOLOGY ^{32/} PERFORMANCE ^{46/}
DESIGN ^{58/} PERSONALISING YOUR CAR ^{68/}
WORLD OF BENTLEY ^{110/} OVER TO YOU ^{116/}
SPECIFICATIONS AND OPTIONS ¹¹⁸

Photography – Colour specification of cars illustrated:

Orange Flame

Beluga leather interior
Piano Black veneer

Thunder

Portland and Fireglow leather interior
Dark Fiddleback Eucalyptus veneer

Dragon Red

Porpoise leather interior
Madrona veneer

Sequin Blue

Linen and Brunel leather interior
Dark Stained Burr Walnut veneer

Bentayga Bronze

Brunel and Camel leather interior
Dark Fiddleback Eucalyptus veneer



“The real voyage of discovery
consists not in seeking new landscapes
but in **having new eyes**”

Marcel Proust



Come, see through new eyes.

For new eyes reveal new worlds, both in epic landscape and breathtaking detail. Both in new environments off-road and familiar ones on it. It is what has allowed Bentley to reappraise the luxury SUV category. To reshape it and, ultimately, redefine it.

Bentley have created a car with the power, performance and technological prowess to impose itself on the most challenging of terrains, yet with the craftsmanship and finesse to withstand the most extreme scrutiny.

The Bentayga is the most exclusive and highly prized sport utility vehicle in the world. It brings unparalleled levels of luxury and blistering performance to those who desire to drive something more than an SUV. From inside it, you can embark on a journey of discovery, of rediscovery and of self-discovery.

Bentley have seen through new eyes.

Now, it's your turn.





Not an SUV. A Bentley.

The Bentayga is, in every sense, the go-anywhere Bentley.

One that takes the essence of the marque's luxury – exquisite craftsmanship with incredible attention to detail – and transports it to the four corners of the world. One that takes the practicality of an SUV and empowers it with true Bentley performance. With cutting-edge technology and a 12-cylinder engine, it delivers the perfect balance of speed, power and efficiency.

Bentayga was born by first challenging the preconceptions of what is possible for an SUV. Designed to push far beyond the pinnacle of today's sport utility vehicle, its performance, allied to unparalleled luxury and contemporary design, mark it out as the definitive SUV. Its astonishing prowess is evident both on-road and off-road, from Trafalgar Square to the Arctic Circle.

By far the most advanced Bentley ever built, the Bentayga features a wealth of highly intuitive driver assistance features. This vehicle is handcrafted with great precision – and equal passion – by expert teams of automotive artisans in Crewe, England. It is a car for those who also share a passion – not just to do more, but to experience more.

To experience the extraordinary.

NEW LANDSCAPES





New landscapes. Familiar surroundings.

Sport Utility Vehicle.

Note that word in the middle: Utility. It sounds cold, clinical – at best, functional. Very much the role utility has played for generations of SUVs.

Enter Bentley Bentayga.

Note that word in the middle: Bentley. Now, utilitarian has been elevated to dramatic new levels of experience. Practicality redefined, with innovative technology, phenomenal engine performance and contemporary design. Whether golfing or shooting, fishing or sailing, touring or trekking, or simply shopping and school-running, function is now housed in tactile, luxuriant form.

Gaze across stunning landscapes as your fingers play across the veneer of the handcrafted fascia, or the precision-engineered knurling on the instrument clusters – which are milled to within a thousandth of an inch. Exquisite touches that you will find anywhere you care to look on the Bentayga.

And you can find the Bentayga anywhere on Earth.



Extreme on the outside. Extreme on the inside.

However dramatic your location, it will be beautifully complemented by the unrivalled elegance of the cabin interior.

The veneers are carefully selected and meticulously mirror-matched to create a seamless flow of high-gloss wood around the entire cabin. Handcrafted chrome details continually catch the eye; the bulls-eye vents, rotary control and gear lever body. A single chrome pinstripe also elegantly underlines the form of the fascia. The quilting applied to the shoulders and bolsters of the seat hides has been rendered in perfect squares, echoing the stitching found on a finely tailored hunting jacket.

Bentayga is the only SUV available with a choice of four, five or seven seat configurations in one body style. In addition, the optional Front Seat Comfort Specification offers 22 different types of adjustment for the driver and passenger, including cushions and backrest bolsters, to envelop the occupants with the highest possible levels of support. A massage function is also included, with six different settings.

As a finishing touch, the whole interior is flooded with light from the tilt and slide panoramic roof. Wherever you drive your Bentayga, you won't want to be anywhere else on Earth.





Jet-set mindset.

When it comes to the realities of modern luxury living, the Bentayga is a car for all seasons. For all activities, however extreme. For all lifestyles, however demanding.

More than 20 innovative new features will make your life as inspiring as the Bentayga ride itself. They encompass a whole spectrum of outdoor pursuits, across a vast range of temperatures – whether at sea level on the Côte d'Azur or the snowline in the Sierra Nevada. The class-leading 12-cylinder engine generates a towing capacity of 3.5 tonnes** – more than ample for speedboats, support watercraft, gliders and horseboxes. And an electrically retracting tow bar* lies behind the rear bumper when not in use.

All features and accessories, from an aerodynamic roof box to a range of tailored storage solutions for skiing, fishing, diving and other active pursuits, offer the luxury of practicality, whilst echoing the exquisite Bentayga styling. The hands-free tailgate, easy-load boot function and load assist tray are also engineered to operate in a simple, intuitive and seamless fashion.





Be ready for any event. On any horizon.

Whether you're whale watching from a rugged coastline or taking in a polo match from the picnic rug, it will be beautifully complemented by the elegant versatility and precision functionality of the Bentayga.

The 'Event Seat'* is a unique accessory that elevates any outdoor occasion. This sliding, folding and removable seat allows the Bentley experience to expand elegantly out from the confines of the car. Its patented design provides comfortable seating for two adults at the Bentayga's rear. Trimmed in leather and finished in signature diamond quilting, it allows occupants to immerse themselves in any outdoor activity, either shaded by the tailgate, or illuminated by the built-in 'stage lighting'.* Any event is instantly given Bentley status.

The Bentayga's capabilities, both on and off-road, enable you to discover new horizons – and what better way to appreciate them than a truly al fresco lunch? The Linley Hamper by Mulliner, finely crafted in aluminium and hand-trimmed leather by the renowned British designer, is specifically made to complement the Bentayga. It contains four sets of stunning cutlery and crockery, plus a bottle cooler with space for two champagne bottles and four Bentley crystal flutes. A last touch of luxury – a Mulliner cashmere picnic rug.



*Not available when seven seat configuration is selected.
Appearance and contents of the Linley Hamper by Mulliner may vary from the image shown.



Emphatically off-road.
Exquisitely on brand.

No matter how inhospitable the surroundings, the Bentayga's wealth of driver assistance technologies, in tandem with unrivalled Bentley craftsmanship, ensure a seamless driving experience to turn even the most demanding of terrains into the most exhilarating of journeys.

With a choice of more than ten engine transmission and suspension calibrations, variable ride heights and a highly versatile Drive Dynamics Mode, the Bentayga suits any driving style, on any road. Even where there is no road.

Hill descent control, roll-over mitigation, trailer sway mitigation and electronic air suspension. The technologies are as numerous as the possible new panoramas. This is an SUV unlike any before it.





Tame any terrain with the turn of a dial.

In the Bentayga, you can negotiate any terrain, without the need to configure complex systems manually. The power to control all the Earth's surfaces is at your fingertips. Your experience remains pure and uninterrupted; as seamless as it is simple.

The Drive Dynamics Mode enables the smoothest of rides over the toughest of environments. Controlled via an intuitive rotary dial, it allows the driver to switch, instantly, between four different on-road pre-set driving modes – Comfort, Sport, Custom and Bentley.

The All Terrain Specification* adds four Responsive Off-Road Settings to those four standard configurations to deliver more combined on-road and off-road settings than any other car. The 'Snow & Grass' setting provides grip on low friction surfaces. 'Dirt & Gravel' gives optimum traction on loose debris. 'Mud & Trail' configures the car's systems for muddy, uneven surfaces and 'Sand' gives greater confidence over dunes. Exhaustively tested underfloor protection also ensures that all key components are safeguarded.

This is relentless luxury equipped with phenomenal all-road capability, for total control with absolute confidence.



*Standard feature in certain regions. Please contact your local retailer for more information.



New Landscapes: the facts.

- Drive Dynamics Mode with Responsive Off-Road Settings
- Bentley Dynamic Ride System and electronic air suspension
- Hill descent control and roll-over mitigation
- Unique patented Bentley Event Seat* with built-in 'stage lighting**
- 3.5-tonne** towing capacity with trailer sway mitigation
- Roof rails and tow bar systems
- Load assist tray and multi-functional storage
- 484 litres / 17.1 cu ft boot volume (five seat configuration)



ENGINE
START
STOP



Don't just see technology. Feel it.

The Bentayga represents the most technologically advanced Bentley ever produced. Conceived with the sole aim of connecting you intuitively to the road, the landscape and the outside world.

Since the launch of the Continental GT over a decade ago, Bentley has long been setting new standards in luxury all-wheel drive technology. New automotive technologies have been developed to integrate in a discreet and unobtrusive way. All are born of 'intelligent functionality' and can be simply configured to suit your personal tastes. Designed to empower, rather than overpower, they allow you to effortlessly absorb the overall driving experience. More than ten new driver assistance systems aid urban driving, longer distance touring and more robust off-roading.

The world is no longer simply a contour map to be negotiated in brutal fashion. Instead, from inside the Bentley Bentayga, the planet becomes an ever-changing backdrop, against which your adventures play out.





All roads lead to pleasure.

Driving a Bentley always has been – always will be – at the heart of what makes it the world’s most desirable automobile. The Bentayga is no exception.

Most of its comprehensive driver assistance systems are focused on enhancing and perfecting the ride experience – creating a cocoon of unrivalled comfort and security. A wide range of new technologies have been developed to aid city driving in urban areas: blind spot assist,* exit warning,* reversing traffic warning,* traffic sign recognition,* top-view camera, pedestrian warning* and more. The head-up display system artfully feeds driving-relevant information into your line of vision, without distracting from your driving line.

Longer journeys also take on a greater sense of freedom. Adaptive cruise control,* night vision,* Bentley Safeguard Plus* and High Beam Assist allow you to enjoy the Bentayga’s performance at speed on the open road – the way a Bentley is meant to be enjoyed.





Be completely connected.

The Bentayga driving experience is about more than just limitless power on all roads. It's about the reassuring knowledge that, from the moment you grip the hand-stitched steering wheel and gaze out over the horizon, the SUV's intuitive technology has put you in total control.

More importantly, it has put you completely in touch.

You and your passengers can stay in constant contact with the outside world, courtesy of the Bentayga's WiFi hotspot and integrated 4G phone module.* Data from the GPS navigation system is enhanced by Real Time Traffic Information* (RTTI) plus Google Earth* and Street View* with a 'breadcrumbs' feature that marks any path taken, on the road, or beyond. Voice-controlled Point of Interest* (POI) search provides fast, easy access to Google's POI* database.

The world-class infotainment system supports Apple CarPlay,* allowing users of iPhones and iPads to access calls, messages, music and video from their devices, without touching them. A single Lightning cable links the device to the car, allowing access to CarPlay*-supported features and apps – including Siri.



New worlds for your passengers.

Passengers can see a choice of worlds through Bentayga.

The first is the real world, as they watch breathtaking vistas slide past the windows and the tilt and slide panoramic roof from the comfort of the lavishly crafted cabin.

The second world is the virtual.

Two independent 10.2" touch-screen entertainment tablets sit behind the front headrests. These combine the functionality of a fully vehicle-integrated system with the convenience of a mobile tablet. Passengers can access main infotainment functions such as radio, TV* and video entertainment, plus navigation features, games, video conferencing and media streaming. Easily removed, these tablets have WiFi and Bluetooth capability and can be used as hand-held devices both inside and outside of the car. Android powered, they also have internal memory, micro-SD and micro-USB slots, plus integrated webcam. Each tablet can play different media independently, either through headphones or the SUV's audio system. And, for practicality, displays can be controlled from the front infotainment unit. Other innovative features include accessing and displaying data, such as fuel level and tyre pressures, and the ability to plan a route and send co-ordinates directly to the Bentayga's navigation system.*





Epic soundscapes.

However magnificent the landscapes that the Bentayga can transport you to, the Naim for Bentley audio system will provide a fitting in-car acoustic experience.

This audio option is the most powerful system ever installed in the SUV sector. Created and balanced specifically for the Bentayga, the Naim system employs active-bass technology to enhance the perception of bass alongside groundbreaking acoustic design. There are a total of 20 speakers, driven by a 1,950W 21-channel amplifier. Nine of these speakers are Balance Mode Radiator speakers that combine the mid-range and tweeter speakers into one. In addition there are four advanced bass speakers – one in each door – and a 300W sub-woofer in the back of the vehicle.

There are also two other concert hall quality sound-system options: the Standard Bentley System and Bentley Signature Audio.* Class-leading audio technology like this is usually found in surround-sound home cinemas. But then, with the extraordinary widescreen views that Bentayga opens up, it is like driving around in your very own luxury movie theatre.

*Standard feature in certain regions. Please contact your local retailer for more information.



Technology: the facts.

- Head-up display system and night vision technology
- Blind spot assist,* exit warning* and traffic sign recognition* for city driving
- Adaptive cruise control, Bentley Safeguard Plus and High Beam Assist for touring
- Integrated 4G phone module,* WiFi hotspot and Bluetooth functionality
- Apple CarPlay* and Google Earth*
- 8" touch-screen display
- Two 10.2" touch-screen entertainment tablets located behind front headrests
- Naim for Bentley audio with 20 speakers driven by a 1,950W 21-channel amplifier
- World-class infotainment system with 60GB solid-state hard drive

PERFORMANCE





Performance. Perfected.

The Bentayga's W12 petrol engine empowers it with performance figures far beyond the pinnacle for today's sport utility vehicle.

Bentayga is, quite simply, the fastest ever SUV.

Performance ultimately comes down to a few crucial measurements: power, torque and acceleration. As you might expect from a Bentley, the Bentayga's figures are phenomenal. Its capabilities are nothing short of staggering: 0 to 100 km/h in 4.1 seconds and a top speed of 301 km/h. Put your foot down and feel the car surge effortlessly forward, with a maximum torque of 900 Nm (664 lb ft) available at just a touch over idle speed. With 608 PS (or 600 bhp) that's truly phenomenal sports car power to match supreme luxury.

The W12 engine.

A complete 'ground-up' redesign from Bentley's engineering experts has produced a W12 engine that delivers a revolutionary balance of power, torque and efficiency. It redefines what an SUV engine is now capable of, enabling the Bentayga to operate effortlessly and economically in all on-road and off-road conditions, and at lateral and longitudinal angles of up to 35°.

A unique double-injection system employs a combination of direct and port injection to maximise fuel economy. The combined Variable Displacement System and start-stop technology have resulted in a class-leading fuel consumption of 21.6 mpg (13.1 litres per 100 km). The twin-scroll turbochargers have also been re-engineered for optimum response, eliminating any feel of turbo lag.

Whereas most engines compromise efficiency for power – the W12 engine elevates both. When it was developed for Bentayga, every single component was re-examined, resulting in an engine that is a full 30 kg lighter than its predecessor, echoing W.O. Bentley's original approach to engine weight reduction nearly a century ago.

The sum total of these many innovations is an engine with no serious rivals – the most technically-advanced 12-cylinder Bentley powertrain ever created.

VARIABLE DISPLACEMENT

When required, the left-hand engine bank shuts down, effectively turning the W12 into a V6, significantly improving efficiency. The change is imperceptible to the driver.

TWIN-SCROLL TURBOCHARGERS

State-of-the-art technology eliminates turbo lag and accelerates efficiencies, allowing the W12 to deliver up to 90% of the available torque within 1.1 seconds.

STOP-START TECHNOLOGY

Stops the engine when the vehicle is stationary or at 'near-to-stop' speeds. Also, when appropriate, the torque converter opens to enable the engine to run at idle when the driver eases off the accelerator.



DIRECT INJECTION AND PORT INJECTION

The combination of these two technologies means the engine can switch seamlessly between the two, depending on which is most efficient.

ENGINEERED FOR OFF-ROAD

Designed to operate at inclinations up to 35°, with oil pick-up points and suction pipes precisely located to ensure turbos always work perfectly. Special seals also facilitate wading requirements.

EMISSIONS AND RANGE

Switchable oil and water pumps operate only when required. Redesigned bearings and obsessive attention to each component's weight improve emissions beyond leading V8 SUVs – just 296 g/km, with a real world range of 650 km / 404 miles.



The road consummately travelled.

The Bentayga is unmistakably a Bentley – bringing the marque's unique and exhilarating driving experience surging into the SUV territory.

Its 'all-road' performance, unrivalled ride comfort and incomparable handling attributes are everything you would expect from a true Bentley. This pulsating engine, allied with the world's first 48V Active Roll Control system – known as Bentley Dynamic Ride – unites the presence of an SUV with the performance of a sports car and the refinement of a luxury saloon. Combine this with a wealth of cutting-edge driver assistance features and you begin to understand why the Bentayga doesn't just lead the SUV category. It completely redefines it. As you would expect from a Bentley, all of these elements are exquisitely packaged together to set a new benchmark for luxury.





Performance: the facts.

- 6.0 litre, 12-cylinder engine with two twin-scroll turbochargers
- Maximum speed of 187 mph / 301 km/h
- 0-60 mph in 4.0 seconds / 0-100 km/h in 4.1 seconds
- 600 bhp / 447 kW / 608 PS @ 5,000-6,000 rpm
- 900 Nm / 664 lb ft @ 1,350 rpm
- Class-leading combined fuel consumption figures of 21.6 mpg / 13.1 litres per 100 km
- Engine oil pick-up position optimised for lateral and longitudinal inclination angles of up to 35°
- Variable Displacement System

DESIGN





Different Bentley. Same DNA.

When the Bentayga concept was originally conceived, the ultimate aim of Bentley's designers was to extend the world-renowned design values of exquisite materials, exclusivity and individuality, and transport this authentic luxury to new landscapes across the entire planet.

The Bentayga is the extraordinary SUV – a true step change in motoring luxury. There has never been an SUV so meticulously crafted, with progressive Bentley design language reinterpreted for today's modern audience. Yet, across all aspects, in broad strokes and macro detail, the Bentayga remains, in every sense, a Bentley.



Designed with light.

Observe the play of light off the dynamic planes and flowing contours of the Bentayga's form. This was the design principle in mind, and made real, through Bentley's renowned sculptural process. Now, the aluminium body shell, supported with high strength steels, radiates formidable elegance.

The stance is muscular. The poise, dynamic. The impact, immediate. Although Bentayga is very much a modern design, the classic Bentley design cues strike you. Excite you. The ultra-sharp powerline draws your eye along the superformed front fender panel, the large sculpted wheel arch and past the 'B' shaped wing vent. The four distinctive 'floating' adaptive LED headlamps frame the iconic matrix grille. Extensive brightware has been integrated into Bentley's first ever SUV tailgate and the two large oval tailpipes hint at the Bentayga's power. The wheel designs also blend powerful traction with potent road presence.



Exploring the interior.

Like all Bentley interiors, the design of the Bentayga cabin began with the Bentley wings. The famous marque inspired the architecture of the cockpit, forming the basis of a symmetrical, double-wing arrangement that flows from door to door. The use of exquisite and varied materials such as soft-touch leathers and natural veneers reflect the multiple layers and textures of the extraordinary Bentayga drive experience.

Light floods in from above to illuminate the sumptuous interior, courtesy of the tilt and slide panoramic roof. Even functional elements are executed in a tactile and uncompromising fashion. Every detail of the handcrafted cabin has been consistently designed to blend into one seamless whole. Sew lines are positioned to within a fraction of a millimetre. Chrome bezels have a consistently tight geometry throughout. Even the door storage ports are integrated into the graphic of the door design. The ergonomic gear lever features a fluid chrome body finished in leather, while the 'B' at its head is encircled with three rows of knurling that match the rotary dial and bulls-eye air vents.



Design: the facts.

- Double Bentley wings cockpit architecture, inspired by the shape of the winged 'B' marque
- Superformed front fender panels with no visible joins or seams
- Signature Bentley radiator grille
- Four 'floating' adaptive LED headlamps with integrated washers
- Two large oval tailpipes
- 60% aluminium / 40% high-strength steel body structure
- Seat design with compact-square quilting applied to shoulder and bolsters
- Two-panel tilt and slide panoramic roof providing 1.35 m² of roof coverage
- Precise hand-stitching on leather and tight, accurate geometry to chrome bezels





PERSONALISING YOUR CAR



Bentayga. Through your own eyes.

There are as many options to configure the Bentayga to your personal taste as there are new landscapes to explore. Once you do, it is highly unlikely you will ever see another one quite like it. Your Bentayga will be as unique as you are.

From the exterior paint and wheels to fine details such as steering wheel upholstery, almost every visible feature can be customised to your specification. But should you desire even more freedom to tailor your Bentayga, the Mulliner team at the Bentley factory in Crewe can undertake completely bespoke modifications to meet your specific requirements.





- 1 Violette
- 2 Grey Violet
- 3 Pale Velvet
- 4 Heather
- 5 Black Velvet
- 6 Azure Purple
- 7 Magenta
- 8 Passion Pink
- 9 Rubino Red
- 10 Sunset
- 11 Damson
- 12 Light Claret
- 13 Burgundy
- 14 Dragon Red II
- 15 St. James' Red (Pearlescent)
- 16 St. James' Red (Solid)*
- 17 Candy Red
- 18 Orange Flame
- 19 Claret
- 20 Amber
- 21 Burnt Orange
- 22 Bronze
- 23 Continental Yellow (Solid)
- 24 Bentayga Bronze
- 25 Monaco Yellow (Solid)
- 26 Havana*
- 27 Sunburst Gold
- 28 Special Magnolia (Pearlescent)
- 29 Gazelle
- 30 Extreme Silver Satin
- 31 Old English White (Solid)
- 32 Special Magnolia (Solid)
- 33 Camel*
- 34 Breeze
- 35 Magnolia (Solid)
- 36 Silver Storm



- 37 Silver Taupe
- 38 Silver Frost
- 39 Ghost White (Pearlescent)
- 40 White Satin
- 41 Ice
- 42 Hallmark*
- 43 Arctica (Solid)
- 44 Moonbeam*
- 45 Magnetic
- 46 White Sand*
- 47 Extreme Silver
- 48 Light Grey Satin
- 49 Porcelain
- 50 Glacier White (Solid)*
- 51 Silver Tempest
- 52 Sandstone
- 53 Dove Grey (Solid)
- 54 Light Gazelle
- 55 Pale Brodgar
- 56 Venusian Grey
- 57 Dark Cashmere*
- 58 Dark Grey Satin
- 59 Tungsten
- 60 Burnt Oak
- 61 Arabica
- 62 Brodgar
- 63 Granite*
- 64 Cumbrian Green
- 65 Barnato (Solid)
- 66 Midnight Emerald*
- 67 Light Onyx
- 68 British Racing Green 4 (Solid)
- 69 Anthracite Satin
- 70 Storm Grey
- 71 Spruce
- 72 Verdant



- 73 Light Emerald
- 74 Pale Emerald
- 75 Apple Green
- 76 Cypress
- 77 Alpine Green
- 78 Glacier Blue (Solid)
- 79 Jetstream II
- 80 Light Windsor Blue
- 81 Silverlake
- 82 Portofino*
- 83 Aquamarine
- 84 Neptune
- 85 Light Sapphire
- 86 Kingfisher
- 87 Pale Sapphire
- 88 Fountain Blue
- 89 Marlin*
- 90 Peacock
- 91 Sequin Blue
- 92 Moroccan Blue
- 93 Blue Crystal
- 94 Thunder*
- 95 Anthracite
- 96 Meteor*
- 97 Windsor Blue
- 98 Dark Sapphire*
- 99 Onyx*
- 100 Titan Grey
- 101 Volcanic Black (Pearlescent)
- 102 Beluga (Solid)*
- 103 Oxford Blue (Solid)
- 104 Black Crystal
- 105 Black Sapphire
- 106 Royal Ebony
- 107 Spectre

*Standard colours.
Please note, the colours reproduced are for representation purposes only and therefore vary slightly from the actual vehicle.



Harness a new world of bespoke colour.

There are over 100 exterior colours – featuring nine different variants of black alone – from which you can choose to adorn the sleek lines of your Bentayga.

However, if your desired colour is not in the existing range, Bentley's paint specialists can also perfectly match any colour sample you provide and reproduce it in an exquisite mirror-like finish on your new Bentayga. Your inspiration could come from any of your life's many spheres: foreign travel, art, jewellery, or simply one of your hobbies.





20" TEN SPOKE ALLOY WHEEL
PAINTED[†]



20" TEN SPOKE ALLOY WHEEL
POLISHED[†]



21" FIVE TWIN-SPOKE ALLOY WHEEL
PAINTED^{*}



21" FIVE TWIN-SPOKE ALLOY WHEEL
POLISHED



21" FIVE TWIN-SPOKE ALLOY WHEEL
BLACK PAINTED AND DIAMOND TURNED



21" SEVEN TWIN-SPOKE WHEEL
PAINTED



21" SEVEN TWIN-SPOKE WHEEL
GREY PAINTED AND DIAMOND TURNED

Perfectly proportioned wheels.

Just like the rest of the Bentayga exterior, its wheels are designed at the Bentley factory in Crewe to perfectly match and complement the SUV's proportions.

The Bentayga's 22" wheels are the largest ever made available on a production Bentley. They are finely machined from a high-strength aluminium forging for the optimum balance of lightness and resilience. They are also 'handed' to ensure the spokes always face the same direction on both sides of the car.

The impressive 21" Five twin-spoke wheel comes in a silver-painted finish, a classic high-polish finish or a striking black painted finish, carefully machined to provide bright accents on the spokes and rim.

A new 21" Seven twin-spoke wheel design is also available in two finishes. One is grey painted and diamond turned, with precision machined accents. The other is painted. Both have directional spokes.

For full all-weather capability, winter compound tyres are also available from your Bentley retailer.



22" FIVE SPOKE DIRECTIONAL ALLOY WHEEL
PAINTED^{**}



22" FIVE SPOKE DIRECTIONAL ALLOY WHEEL
POLISHED^{**}



^{*}Standard wheel. ^{**}Regional applicability.
[†]No cost option. All other wheels are a cost option.



Veneer perfection.

Nothing quite says luxury like handcrafted veneers. It is why, for almost a century, Bentley has placed such importance on the selection of its natural materials. And, equally importantly, the reverence it holds for the generations of artisans who turn these beautiful raw materials into such masterpieces.

From the subtle tones of Tamo Ash and Madrona to the dark, smoke-like grains of Burr Walnut and Dark Fiddleback Eucalyptus. A new veneer, Liquid Amber, has also been added to this stunning collection. Its rich reddish hue, achieved through a natural smoking process, has a straight grain for a more contemporary look.

Bentley works with a wide variety of tree species, all sourced ethically from forests around the world. For every tree used, another seven are replanted. And unique they most certainly are, often over 200 years old. Every sheet of veneer in every Bentley can be traced to the tree of its origin; the beginning of a meticulous process that takes around five weeks for every car. Each sheet is cured for 72 hours, then lovingly sanded and treated with five layers of lacquer, by hand, over a ten-day period. The resulting shine is both lavish and deep – beautifully highlighting the natural grain of the wood. This finish is then further treated with a UV stabilising layer to protect the treated wood from the sun for many years to come.



Tamo Ash



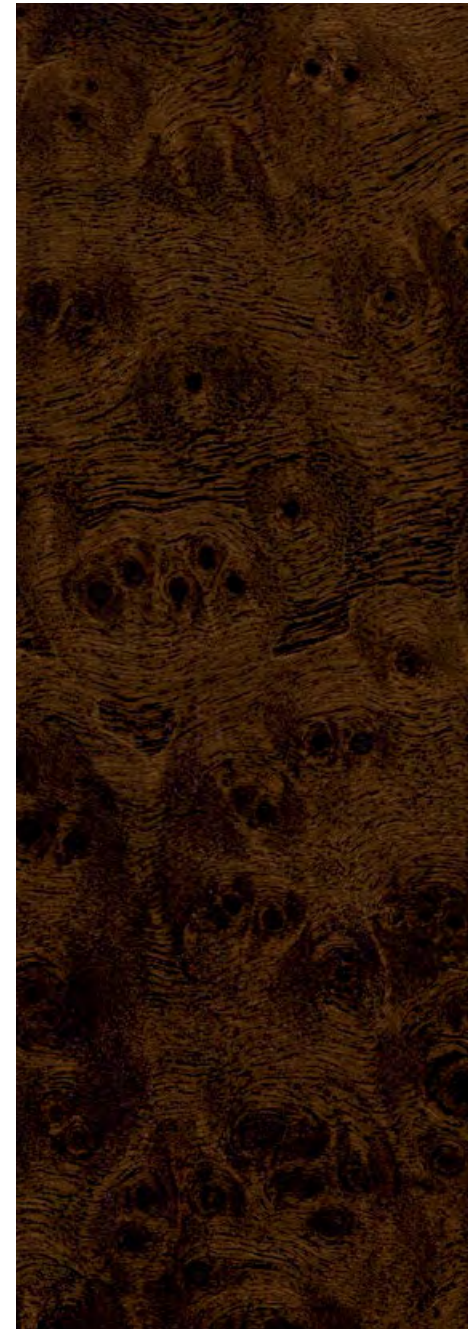
Madrona



Burr Walnut*



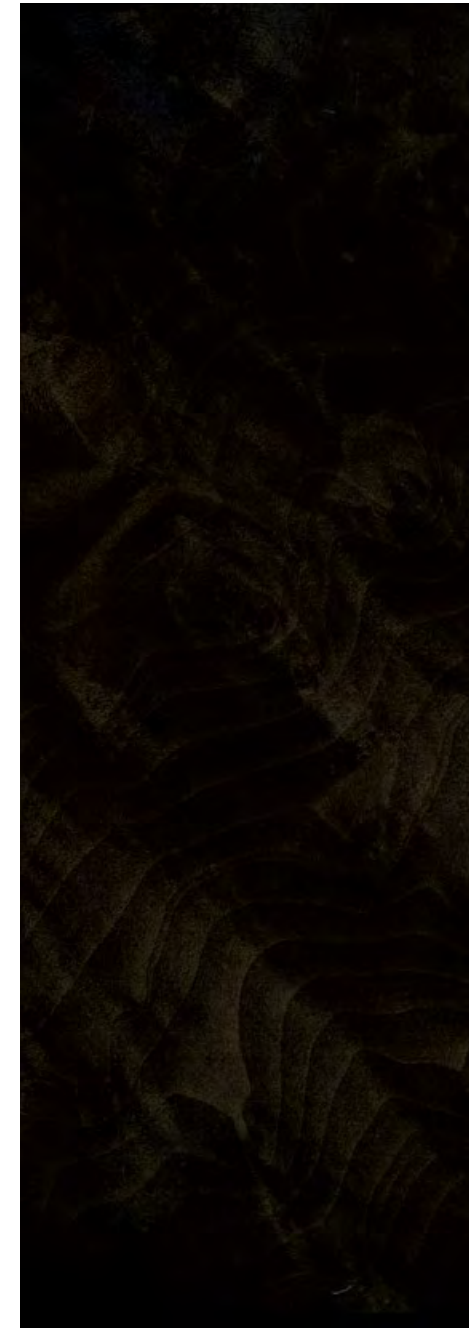
Dark Fiddleback Eucalyptus†



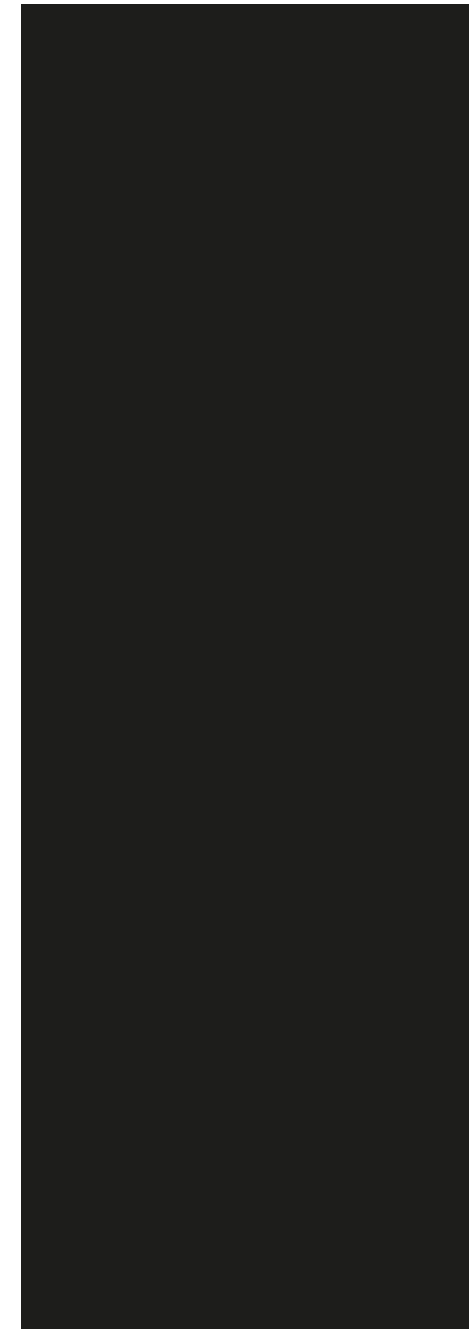
Dark Stained Burr Walnut†



Liquid Amber



Dark Stained Madrona



Piano Black†

*Standard veneer. †No cost option. All other veneers are a cost option. Please note, the colours reproduced are for representation purposes only and therefore vary slightly from the actual vehicle.

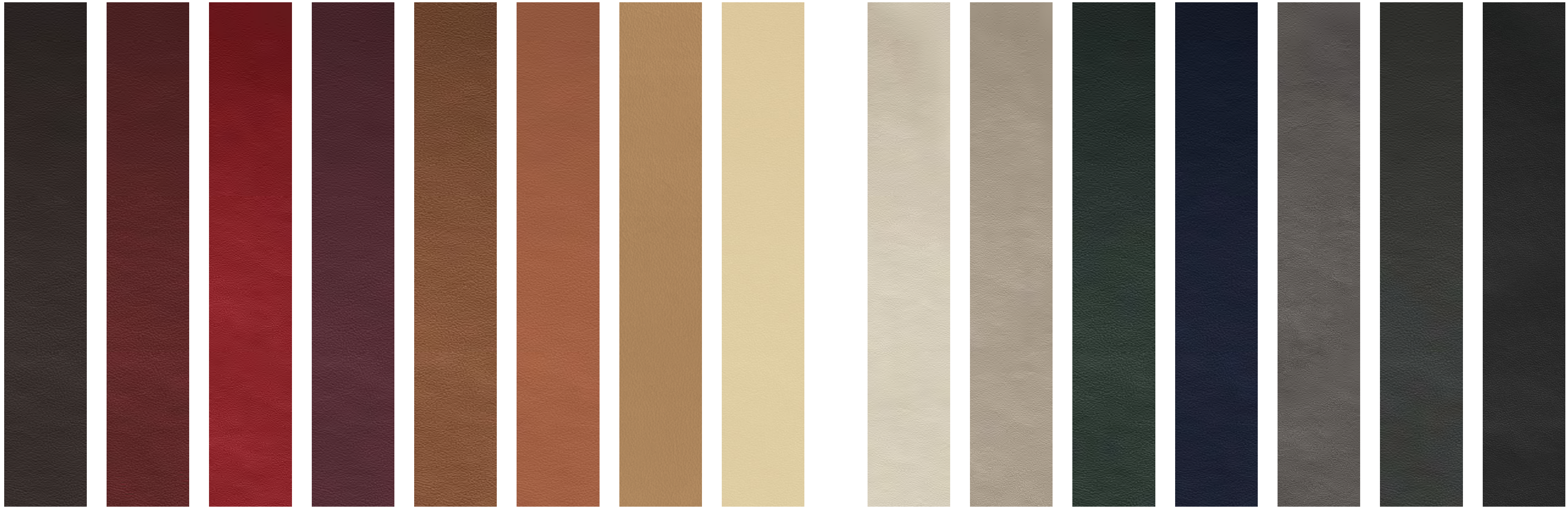


Interior hides – through natural selection.

The unique and timeless process that Bentley employs to make the leatherwork begins long before the hides reach the factory. In fact, the craftsmen's search for the most exquisite leathers to grace the Bentley covers the entire globe.

And it is Northern Europe where Bentley's high standards are met. Here, the herds graze at altitudes that leave them naturally free from insect bites and other disfiguring marks, which would otherwise leave blemishes on the hides. Those chosen, all carefully hand-selected by craftsmen and women at the Bentley workshop, are the only ones judged fine enough for upholstering each individual Bentley.

All hides undergo a traditional tanning process, which imbues them with a rich, mature leather aroma reminiscent of classic Bentley interiors. They are then dyed in a range of 15 colours, with bespoke hues available on request to the Mulliner team through your retailer showroom. Only once each skin is pre-tensioned and thoroughly inspected, can the hand upholstery begin. Whichever hide and colour combination you choose, you can rely on the exacting standards of the artisans who created them to bring your vision to life.



Burnt Oak

Fireglow

Hotspur

Damson

Saddle

Newmarket Tan

Camel

Magnolia

Linen

Portland

Cumbrian Green

Imperial Blue

Porpoise

Brunel

Beluga



One car – many configurations.

With a new seven seat configuration* to add to the existing four* and five seat arrangements, the world's first genuine luxury SUV has an interior that can truly flex around your lifestyle. All without compromising the beautiful symmetry of the cabin space.

The four seat layout* offers the ultimate statement in terms of luxurious comfort. The two individual rear seats can be adjusted to the occupant in 18 different ways, and also include massage and ventilation functions. A veneered rear-centre console contains cup holders, storage and USB charging sockets. A fixed diamond-quilted backboard divides the cabin from the boot area – serving to further enhance the feeling of cocooned indulgence.

The five seat arrangement adds flexibility to the luxurious rear space. The outer seats, heated and completely adjustable, also fold down with the central seat to maximise carrying capacity.

A new seven seat option* introduces yet greater adaptability – opening up a world of adventure to more people. The two third-row seats fold and deploy electrically. The second row has three individual, manually adjustable seats, of which the outer two fold and tumble to create easy access to the third row. The middle seat armrest also folds down to offer the convenience of two perfectly placed cup holders.

Interior features: the facts.

- Mulliner Driving Specification as standard with diamond quilting to seats and doors
- Interior mood lighting in six colours* with 'My Mood' configurable functionality
- Colour-coded boot carpets*
- Contrast binding to overmats*
- Hand-upholstered leather seats
- Twin-stitched hide (contrast stitching optional)
- Ethically sourced, mirror-matched veneers
- New Liquid Amber veneer*
- Four,* five and seven* seat configurations
- Choice of 15 hides and eight veneers
- Bulls-eye air vents with chrome organ stop controls
- Two Breitling dashboard clock options:† choice of white or black mother-of-pearl face with eight diamonds at index positions



*Cost option.
†Subject to availability.



Bentayga Styling Specification.*

The Bentayga is a car of both beauty and stature. But, for those who desire even more attitude, the Bentayga Styling Specification awaits.

This is a suite of carbon fibre additions created by the same team responsible for the Bentayga's sleek lines. The features in this cleverly designed package offer more than simply an aesthetic improvement – they actually improve aerodynamic performance and impact positively on how the SUV feels on the road.

In all, there are ten precision-engineered modifications to the front, rear and side of the Bentayga. These include a rear tailgate spoiler, front air blades, splitters for the front bumper grilles and side sill extensions.



Black Brightware Specification.*

For a more individual take on the Bentayga's elegant exterior styling, the Black Brightware Specification replaces all polished chrome details with black chrome alternatives.

Features including the bezels around the lights and number plates, the Bentley matrix grille and the Bentley 'B' wing vents take on a richer, darker sophistication.





Multiple new landscapes. Many optional packages.

Creating a bespoke Bentayga is a deeply rewarding experience. The extensive range of exterior colours, trims and feature combinations offers a virtually limitless number of possibilities from which you can create your own unique specification.

Should you prefer, Bentley has also created their own unique selection of optional packages that can add to your overall ownership experience. Choose from individual, or multiple package options. All work in harmony to create a very personal luxury SUV.

TECHNOLOGY

ALL TERRAIN SPECIFICATION*

- Drive Dynamics Mode with Responsive Off-Road settings
- Underfloor protection
- Top-view camera with auto-dimming mirrors
- Luggage management

CITY SPECIFICATION*

- Park assist
- Top-view camera with auto-dimming mirrors
- Traffic sign recognition
- Pedestrian warning*
- City safeguard
- Reversing traffic warning

TOURING SPECIFICATION*

- Adaptive cruise control
- Head-up display
- Bentley Safeguard Plus (including city safeguard)
- Lane assist
- Traffic assist
- Night vision

CONVENIENCE / COMFORT

EVENT SPECIFICATION**

- Rear Event Seat
- Tailgate down-lighters

SUNSHINE SPECIFICATION

- Electrically operated blinds for rear side windows
- Double sunvisor

SMOKER'S SPECIFICATION

- Front and rear ashtrays
- Cigar lighters

FRONT SEAT COMFORT SPECIFICATION (Five and seven seat configuration)

- Comfort headrests to front seats
- Front seats, 22-way electrical adjustment, two memory function
- Three-point seat belts to front with electric height adjustment and memory system
- Heated and ventilated front seats with massage function

FOUR SEAT COMFORT SPECIFICATION WITH REAR CENTRE CONSOLE

- Front Seat Comfort Specification (as previously detailed)

- Two 18-way adjustable rear seats with rear centre console
- Comfort headrests to rear outer seats

SEVEN SEAT SPECIFICATION

- Three seats in second row
- Two electrically folding seats in third row

DESIGN

BENTAYGA STYLING SPECIFICATION

- Front splitters to bumper grilles
- Sill extensions
- Rear diffuser
- Mirror caps
- Bi-plane tailgate spoiler
- Alternative exhaust tailpipe finisher

BLACK BRIGHTWARE SPECIFICATION

- Inner and outer headlamp bezels
- Radiator shell surround and matrix
- Lower front and rear door, and rear bumper brightware
- Side-glass brightware
- Rear lamp bezels
- Rear number plate surround bezel
- Wing vent

MULLINER DRIVING SPECIFICATION

Fitted as standard:

- Diamond-quilted seats, front and rear doors
- Drilled alloy sports foot pedals
- Jewel fuel and oil filler cap
- Embroidered Bentley emblems

ENTERTAINMENT

BENTLEY REAR ENTERTAINMENT*

NAIM FOR BENTLEY

BENTLEY SIGNATURE AUDIO*

*Regional applicability. Certain options and specifications may appear as standard or may not be available. Please contact your local retailer for more information.
 **Not available when seven seat configuration is selected.

Explore our colour range.

In the right combinations, colours can be highly evocative. And, when also combined to harness sumptuous materials and exquisite handcrafting, the results can be both striking and deeply moving. The subtlest adjustment of one hue can unlock the beauty and full potential of those around it.

It is best, of course, to discover this for yourself. And you can do this now online at BentleyConfigurator.com. You can also explore the following examples of the Bentley designers' creativity as they demonstrate the power of a perfectly-planned palette.

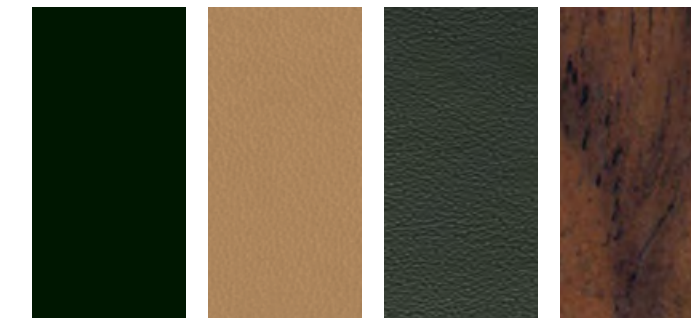


Highland.

Imagine surging through a picturesque Scottish glen with light flitting across the sculpted Barnato paintwork. A colour named after the legendary Bentley Boy, Woolf Barnato, who would no doubt have urged even greater speed. The main hide of Camel is beautifully complemented by the Cumbrian Green secondary hide. The Burr Walnut veneer on the fascia only serves to add a swirling natural flourish to this evocative experience.



Four seat configuration.



Exterior Paint: Barnato
Main Hide: Camel
Secondary Hide: Cumbrian Green
Veneer: Burr Walnut

Stonecutter.

The hard Tungsten grey of the exterior echoes some of the world's most rugged rockscapes – new terrain that the extraordinary SUV now opens up to you. Inside however, the cool calm ambience of the Portland and Fireglow hides provides a sophisticated counterpoint, and a perfect canvas for the natural beauty of the Dark Fiddleback Eucalyptus veneer.



Four seat configuration.



Exterior Paint:
Tungsten

Main Hide:
Portland

Secondary Hide:
Fireglow

Veneer:
Dark Fiddleback
Eucalyptus

Macchiato.

This exhilarating configuration emphasises the presence and power of the Bentayga experience. Sculpted in rich Bentayga Bronze, its electrifying exterior gives way to a luxurious Linen primary hide, coupled with contrasting Saddle secondary hides. With the deep, swirling glamour of its Burr Walnut veneers, consider it a caffeine hit of craftsmanship.



Four seat configuration.



Exterior Paint:
Bentayga Bronze

Main Hide:
Linen

Secondary Hide:
Saddle

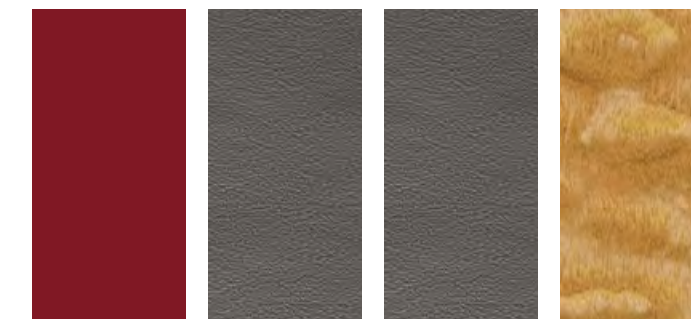
Veneer:
Burr Walnut

Red Mist.

No colour signifies a heightened state of excitement like the Dragon Red exterior of this sleek, powerful Bentayga. While the Porpoise hides and exquisite Tamo Ash veneers create a contrasting sense of inner calm, still the overriding intent of this uncompromising configuration is clear: discover new worlds. And new emotions.



Five seat configuration.



Exterior Paint:
Dragon Red

Main Hide:
Porpoise

Secondary Hide:
Porpoise

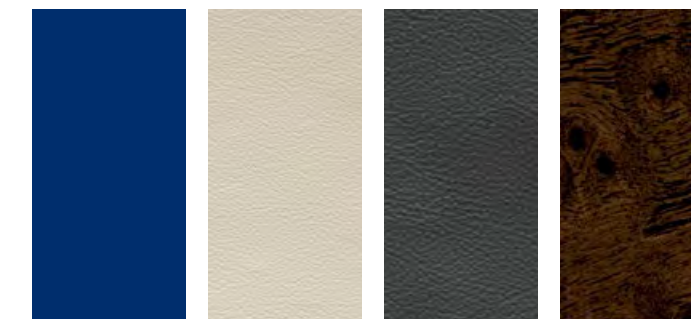
Veneer:
Tamo Ash

Big Skies.

This vividly powerful colour configuration is evocative of deep blue skies and even deeper blue seas. Of vast open spaces and truly epic landscapes. All, of course, which are yours to discover in the extraordinary SUV. The Sequin Blue exterior is perfectly coupled with Linen and Brunel hides, and the swirling grain of the Dark Stained Burr Walnut veneer.



Four seat configuration.



Exterior Paint:
Sequin Blue

Main Hide:
Linen

Secondary Hide:
Brunel

Veneer:
Dark Stained
Burr Walnut

The bespoke Bentayga, by Mulliner.

By inviting Mulliner to work on your behalf on the specification and finish of your Bentayga, you are doing more than simply ordering a customised SUV. You are creating a deeply personal statement – a unique extension of yourself – that will reward you every day of your life. The process of personalising your car can be as pleasing and effortless as driving the finished Bentley itself.

Established in 1760, Mulliner was one of Britain's first coachbuilders. Originally for horse-drawn carriages, the Mulliner name has become a byword for sophisticated luxury. Today, the Mulliner workshop undertakes every bespoke Bentley project. From requests as simple as monogrammed upholstery to the kind of tailored bodywork modifications that can only be undertaken by a skilled coachbuilder, the Mulliner team delivers craftsmanship on a new level.

Its Bespoke Hide Service, for example, enables you to commission a hide colour to match any sample you care to provide. Whether a favourite suit, an exquisite watch or piece of jewellery, or even a particular hue from a much-admired painting. Mulliner's experts can recreate any shade you specify and reproduce it anywhere in your car. The service can also be extended to cover upholstery, accent-coloured interior details and exterior paintwork.

The Mulliner Tourbillon by Breitling.

Bentayga is a remarkable vehicle, of that there can be no doubt. Yet there are always opportunities to push beyond the boundaries in pursuit of the truly spectacular. It is in this spirit that Mulliner and Breitling have collaborated to create what could be the most exquisite timepiece ever designed for a car.

Mounted in a case embedded in the fascia and crafted from 18-carat white, yellow or rose gold, the Tourbillon winds itself every fifteen minutes by spinning on its axis – an operation you will never tire of watching. Diamond indices adorn a face that can be commissioned in a choice of natural or black mother-of-pearl, while the illumination levels are synchronised with the rest of the car's mood lighting – another shining example of Bentley's attention to detail.





WORLD OF BENTLEY



BENTLEY CHILD SEAT*

Accessories.

Bentley's designers and engineers are involved in setting the specifications for each of the Bentayga's accessories. All are designed with the same meticulous attention to detail as the car itself, and all are rigorously tested to meet Bentley's demanding standards.

These accessories have been designed to cater for an enormous range of lifestyles and outdoor pursuits, including the following examples:

- Bentley child seats,* which can be personalised with your child's name, and trimmed to match your interior specification
- The soft car cover provides quality indoor protection for your Bentayga
- The snow chains provide extra grip, handling and security in extreme conditions such as heavy snow or compacted ice
- Deployable sill step, styled to complement the SUV, is automatically deployed by opening the relevant side door
- A sleek roof box, designed to match the car's aerodynamic styling
- Tow bar mounted cycle carrier, that can securely carry two bicycles on the rear of the car

*Regional applicability.



SOFT CAR COVER



DEPLOYABLE SILL STEP



TOW BAR MOUNTED CYCLE CARRIER



SCENTED CANDLE - TERGUS 37

Bentley Collection.

The Bentley Collection is a range of extraordinary products, each with their own identity. What unites them is Bentley's vision, passion, and unmistakable DNA.

Developed in conjunction with the Bentley Design team, the knurling cufflinks are an exact replica of the Bentayga gearshift and feature the signature Bentayga knurling. The Bentayga luggage set draws its inspiration from the sweeping symmetry of the Bentayga fascia and the architecture of the headrests, and can be commissioned in bespoke colours to match the interior hide of your vehicle.

The two Bentayga Edition Breitling watches – the Breitling Cockpit B50 Bentayga Edition, and the ladies' Breitling Chronomat 38 Sleek D Bentayga Edition all share distinctive signature features including black mother-of-pearl dial, Bentayga Bronze hands and black Bentley stitch pattern rubber strap.

The precision scale model cars in Bentayga Bronze, Dark Sapphire and Glacier White replicate the craftsmanship found on the car in exacting detail.

The Bentley Collection also offers a range of handcrafted leather bags and accessories, clothing and homeware. Every item embodies the essence of the Bentley marque – unparalleled craftsmanship and incredible attention to detail.

To view the Collection, please visit your authorised retailer or visit BentleyCollection.com



KNURLING CUFFLINKS



BREITLING COCKPIT B50 BENTAYGA EDITION WATCH



BENTAYGA FITTED LUGGAGE



LEATHER INLAY PHOTO FRAME



1:43 BENTAYGA SCALE MODEL IN DARK SAPPHIRE



SNOW CHAINS



ROOF BOX



Bentley events.

Every year, Bentley runs a series of events created for Bentley drivers, enthusiasts and for those wishing to gain a closer acquaintance with the brand.

The Power on Ice experience, for example, provides the opportunity to push the Continental, the Flying Spur and now the Bentayga to their limits on the frozen lakes of Northern Finland. Whereas Bentley Grand City Tours offer personalised, chauffeur-driven trips to the world's most iconic cities. In fact, there is a Bentley event to satisfy the most ardent thrill seeker or most cultured adventurer.

To discover more, please visit your local Bentley retailer or visit BentleyMotors.com

Financing your Bentayga.

Finance agreements are tailored to ensure you make the most of your investment.

While other financiers look only at their customer, the Bentley Financial Service experts create bespoke packages, based not just on your personal circumstances, but also on the car you commission.

To discover more, please visit your local Bentley retailer or visit BentleyMotors.com



Events.BentleyMotors.com



The Bentley Experience.

The Bentley Experience begins at CW1 House and is a chance, quite literally, to see through Bentley's eyes.

It offers an immersive and memorable brand experience at the home of the Bentley factory in Crewe. It is here that the Bentayga, and all other Bentley models, are handcrafted to perfection. CW1 House contains the full model range with a dedicated personalisation area, bespoke Mulliner room and boutique giving you a clear window into the world of the Bentley brand. Past, present and future.

With the opportunity to visit Bentley's factory, the Bentley Experience offers a unique insight into the world-class design and engineering required to create a Bentley. Factory visits are available exclusively to customers.

To register your interest and find out more, please contact your local Bentley retailer.





Bentayga. Experience it.

No other car combines Bentley performance with such potential for adventure.

New landscapes await you. It's time to explore them...

To arrange a test drive, please contact your local Bentley retailer, or for more information on the Bentayga, visit BentleyMotors.com

SPECIFICATIONS AND OPTIONS



Bentayga

STANDARD SPECIFICATION

EXTERIOR

- Choice of 17 standard paint colours: Beluga (Solid), Camel, Dark Cashmere, Dark Sapphire, Glacier White (Solid), Granite, Hallmark, Havana, Marlin, Meteor, Midnight Emerald, Moonbeam, Onyx, Portofino, St. James' Red (Solid), Thunder, White Sand
- 21" Five twin-spoke alloy wheel – painted
- Brake system with Electronic Stability Programme (ESP) with Traction Control System (TCS), Anti-lock Braking System (ABS), Electronic Brake Force Distribution (EBD), Hydraulic Brake Assist (HBA), Drag Torque Control (MSR), Electronic Differential Lock (EDL)
- Front-vented disc brakes (400 x 38 mm) with Bentley branded black brake callipers
- Rear-vented disc brakes (380 x 30 mm)
- Electronic parking brake with drive away assist
- Electronic Tyre Pressure Monitoring System (TPMS)
- Front suspension – four-link double wishbones
- Rear suspension – trapezoidal multi-link
- Air springs with Continuous Damping Control (CDC)
- ESP off-road features: roll-over mitigation (ROM), hill descent control, trailer sway mitigation (TSM), ESC off-road mode
- Bentley Dynamic Ride System
- Four 'floating' adaptive LED headlamps with integrated headlamp washer
- Full LED tail lamps
- Rear fog lamps
- Twilight sensor control and tunnel detection for lighting
- Bright chrome radiator matrix grille
- Lower front bumper grilles in black
- Lower bodywork in technical grey finish
- Roof rails
- Polished brightware to side windows
- Large oval exhaust tailpipes
- Front fender vent
- Black bonnet and boot Bentley wing badges
- Panoramic roof with tilt and slide front panel and fixed rear panel
- Jewel fuel and oil filler caps
- Electronically adjustable door mirrors with heating, power folding and memory functions

- Power latching to driver and passenger doors
- Power open-and-close boot system
- Remote central locking
- Volumetric ultrasonic alarm
- Keyless entry and ignition
- Heated, acoustic, front screen
- Heated rear screen
- Acoustic side glass

INTERIOR

- Choice of four veneers: Burr Walnut, Dark Fiddleback Eucalyptus, Dark Stained Burr Walnut, Piano Black
- Five seat configuration with diamond-quilted seat design
- Choice of four colour splits
- Choice of 15 hide colours: Beluga, Brunel, Burnt Oak, Camel, Cumbrian Green, Damson, Fireglow, Hotspur, Imperial Blue, Linen, Magnolia, Newmarket Tan, Porpoise, Portland, Saddle
- Deep pile carpets – match to main or secondary hide
- Boot carpet in Beluga
- Seat belts to match all hide colours
- Embroidered Bentley emblems (no cost option)
- 16-way electric front seats, heated, and with memory*
- Twin front armrest
- Dashboard-mounted Bentley branded analogue clock
- Metal bulls-eye vents with organ stops, front and rear
- Instrument dials with satin chrome bezels
- Treadplates branded with 'Bentley'
- Drilled alloy sports foot pedals
- Footwell illumination
- Single-tone, three spoke, hide-trimmed steering wheel*
- Steering wheel mounted gearshift paddles
- Electric tilt-and-reach adjustment steering column with memory and easy-entry functions
- Lockable, cooled glove box
- ISOFIX seat fixings to rear seat
- Rear heated bench seat
- 12V power sockets (three in cabin, one in boot)
- Rain-sensing windscreen wipers
- Alarm and immobiliser
- Multi-zone automatic climate control system

- Side air curtains
- Driver and front passenger airbag with front passenger deactivation*
- Front and rear side thorax airbags

DRIVER ASSIST STANDARD FEATURES

- Blind spot assist*
- Reversing camera with graphic on infotainment screen and audible warning
- Front and rear Park Distance Control
- Exit warning*
- High Beam Assist
- Adaptive low beam
- Hill descent function
- Drive Dynamics Mode
- Navigation – featuring text-to-speech, voice destination entry and 3D building display*
- Voice control and text-to-speech functionality
- Online real time traffic information*
- Google Earth*
- Google Street View*
- Google POI* (voice search)
- 4G LTE telephone module*
- Bluetooth telephone preparation
- Active engine mounts
- Engine start/stop button

ENTERTAINMENT STANDARD FEATURES

- Infotainment system with 8" capacitive touch-screen display, incorporating digital radio, HDD navigation, advanced music interface (AMI), single DVD/CD slot, two SD card slots and Bluetooth (A2DP) and WiFi (uPnP) streaming
- Audio system with ten speakers
- Apple CarPlay*
- Satellite radio (Sirius)*
- 60GB solid-state hard drive
- WiFi hotspot*
- Bluetooth and WiFi audio streaming
- Touch-screen remote

OPTIONAL SPECIFICATION

EXTERIOR

- 90 additional exterior paint colours and bespoke colour matching service
- Body coloured lower bodywork
- 20" Ten spoke alloy wheel – painted (no cost option)
- 20" Ten spoke alloy wheel – polished (no cost option)
- 21" Five twin-spoke alloy wheel – polished
- 21" Five twin-spoke alloy wheel – black painted and diamond turned
- 21" Seven twin-spoke wheel – grey painted and diamond turned
- 21" Seven twin-spoke wheel – painted
- 22" Five spoke directional alloy wheel* – painted
- 22" Five spoke directional alloy wheel* – polished
- 21" summer tyres – in lieu of all-season tyres
- Space saving rear wheel**
- Hands-free tailgate*
- Bright chromed matrix style grille to lower bumper apertures
- Electrically retracting/fixed tow bar*
- Rear privacy glass*
- Battery charger*
- Union flag exterior badge
- Bentayga Styling Specification (retailer fit option)
- Bentayga Blackline Specification
- Deployable sill step (retailer fit option)
- Cross bars (retailer fit option)
- Heavy duty roof protection film between roof rails (retailer fit option)

INTERIOR

- Four Seat Comfort Specification with rear centre console (includes Front Seat Comfort Specification)
- Front Seat Comfort Specification including six massage programmes, ventilation, adjustable bolsters, electrical seatbelt adjustment and comfort headrests
- Seven Seat Specification with three seats in second row and two electrically folding seats in third row
- Contrast stitching

- Hand cross-stitching to steering wheel in contrasting colour
- Choice of four additional veneers: Dark Stained Madrona, Liquid Amber, Madrona, Tamo Ash
- Veneered picnic tables
- Interior mood lighting in six colours: Aurora, Jetstream, Magenta, Moonbeam, Neptune, Rubino and 'My Mood' functionality
- Duo-tone, three spoke, hide trimmed steering wheel*
- Heated, duo-tone, three spoke, hide trimmed steering wheel*
- Heated, single-tone, three spoke, hide trimmed steering wheel*
- Colour-coded boot carpets to match interior carpet (available in five colours, not available on Seven Seat Configuration)
- Contrast binding to overmats
- Deep pile overmats to front and rear*
- Lambswool rugs to front and rear (in addition to standard overmats)
- Load assist tray (retailer fit option)
- Trimmed storage compartment mounted onto the load assist tray (retailer fit option)
- Luggage management with telescopic dividing bar and restraining straps*
- Parking heater* with radio remote control
- Remote controlled garage door opener*
- GPS tracking system full fitment, in addition to standard alarm system*
- Breitling clock with white mother-of-pearl face with eight diamonds at index positions**
- Breitling clock with black mother-of-pearl face with eight diamonds at index positions**
- Valet key*
- Dog crate (retailer fit option)
- Veneered centre fascia panel

ENTERTAINMENT

- Naim for Bentley
- Bentley Rear Entertainment*
- Bentley Signature Audio*
- Digital TV* tuner and digital radio

PACKAGES

- All Terrain Specification*
- Touring Specification*
- City Specification*
- Event Specification†
- Sunshine Specification*
- Smoker's Specification*

^{*}Regional applicability. Certain options and specifications may appear as standard or may not be available. Please contact your local retailer for more information.

^{**}Subject to availability.

[†]Not available when seven seat configuration is selected.

SPECIFICATIONS



Engine: 6.0 litre twin-turbocharged direct injection W12
Max power: 600 bhp / 447 kW / 608 PS @ 5,000-6,000 rpm
Max torque: 900 Nm / 664 lb ft @ 1,350 rpm
Transmission: 8-speed automatic
Driveline: Permanent all-wheel drive with 40:60 front-to-rear torque split
Top speed: 187 mph / 301 km/h
0-60 mph / 0-100 km/h: 4.0 seconds / 4.1 seconds
Wheelbase: 2,995 mm / 9 ft 10 in
Overall length: 5,140 mm / 16 ft 10 in
Width (across body): 1,998 mm / 6 ft 7 in
Width (including mirrors): 2,224 mm / 7 ft 4 in
Overall height: 1,742 mm / 5 ft 9 in
Fuel tank: 85 litres / 18.7 gallons / 22.5 US gallons
Boot volume (four seat configuration): 431 litres / 15.2 cu ft
Boot volume (five seat configuration): 484 litres / 17.1 cu ft
Boot volume (seven seat configuration): 215 litres / 7.6 cu ft

Kerb weight* (EU): 2,440 kg / 5,379 lb
Gross weight*: 3,250 kg / 7,165 lb

Fuel consumption (EU cycle)
Urban: 14.9 mpg / 19.0 l/100 km
Extra urban: 29.4 mpg / 9.6 l/100 km
Combined: 21.6 mpg / 13.1 l/100 km
CO₂ emissions: 296 g/km

Fuel consumption (EPA cycle)
City driving (US): 14.0 mpg
Highway driving (US): 20.0 mpg
Combined (US): 16.0 mpg

*Based on four and five seat configuration.





Bentley Motors Limited, Pym's Lane, Crewe, Cheshire, CW1 3PL, England. BentleyMotors.com
The models presented in this brochure include optional specifications. Specifications, standard equipment, options, fabrics and colours are subject to change without notice. Your Bentley retailer will always have the latest information. The name 'Bentley' and the 'B' wings design are registered trademarks of Bentley Motors Limited. Bentley Motors Limited acknowledges the rights of third parties in other trademarks. The models shown may include European and non-European specifications. © 2016 Bentley Motors Limited. Printed in England.